

# Wi-Fi Plug Pro

## Quick Installation Guideline

tion

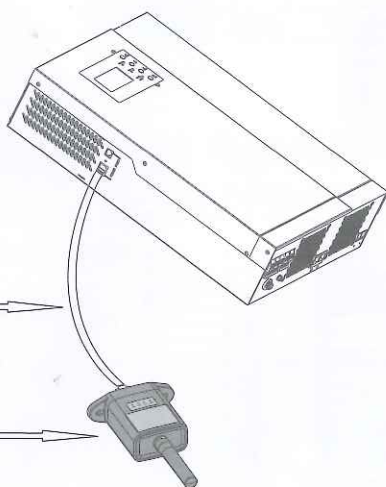
ponding  
on the right table,  
e model of the

corresponding icon.  
lation according to  
ade,  
atus of the LED light  
when 4 LED light  
ing the normal

ne end of the communication cable to the WIFI module,  
ect the other RJ45 port to the COMM port of the inverter  
in tightly.  
WIFI module in a safe position and make it stable.  
not place it directly on the inverter to avoid interference.

IRE

PLUG



## 2. Wireless Router Connection

### 2.1 Download APP

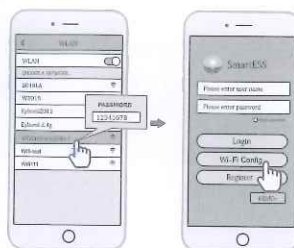
① Scan the QR Code on the right side and download the APP.



SmartESS(iOS)



SmartESS(Android)

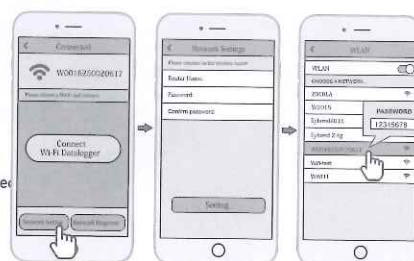


### 2.2 Connect Wi-Fi Datalogger

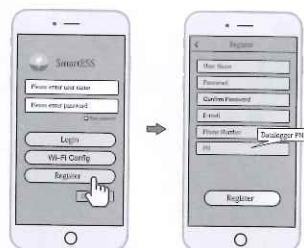
- ① Select the same number of Wi-Fi Plug Pro PN to connect on your phone WLAN.  
(InitialPassword:12345678)
- ② Open the APP, tap the Wi-Fi Config button to enter this page.

### 2.3 Network Setting

- ① Then tap the Network Setting button.
- ② According to the prompts, type in the information to finish the network setting.
- ③ After the Wi-Fi Plug Pro is restarted, reconnect the Wi-Fi which connected by step 2.1.



## 3. Create Account And Add Datalogger



### 3.1 Create Account

- ① Open the APP, tap the Register button to enter this page.
- ② According to the prompts, type in the information to create an account.

### 3.2 Add Datalogger

- ① Login the account and click the Datalogger button. Tap the "+" button on the top-right corner of the Datalogger page.
- ② Scan the PN on the Wi-Fi Plug Pro, or input it manually.
- ③ According to the prompts, type in the information to finish add datalogger.

