

Wi-Fi Plug Pro

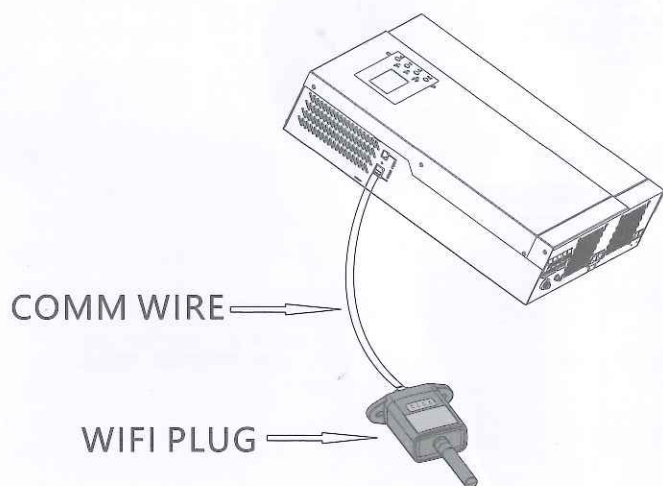
Quick Installation Guideline

1. Installation

- Find the corresponding interface code on the right table, according to the model of the datalogger.
- Based on the corresponding icon, finish the installation according to the interface code.
- Confirm the status of the LED light (After step2.3, when 4 LED light keep on, showing the normal working status).

Datalogger Model	Interface Code	Interface Icon
Wi-Fi Plug Pro	①	

- Connect one end of the communication cable to the WIFI module, and connect the other RJ45 port to the COMM port of the inverter and plug it in tightly. Place the WIFI module in a safe position and make it stable. Please do not place it directly on the inverter to avoid interference.



2. Wireless Router Connection

2.1 Download APP

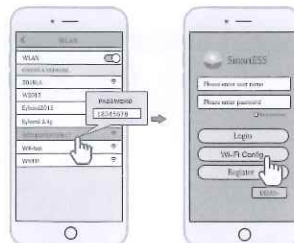
- Scan the QR Code on the right side and download the APP.



SmartESS(iOS)



SmartESS(Android)

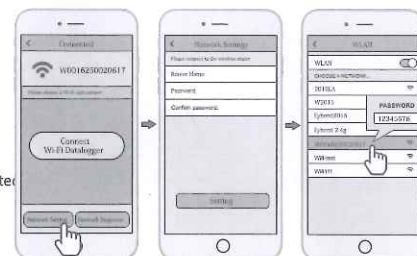


2.2 Connect Wi-Fi Datalogger

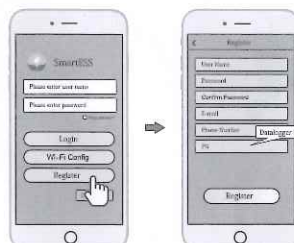
- Select the same number of Wi-Fi Plug Pro PN to connect on your phone WLAN. (InitialPassword:12345678)
- Open the APP, tap the Wi-Fi Config button to enter this page.

2.3 Network Setting

- Then tap the Network Setting button.
- According to the prompts, type in the information to finish the network setting.
- After the Wi-Fi Plug Pro is restarted, reconnect the Wi-Fi which connected by step 2.1.



3. Create Account And Add Datalogger



3.1 Create Account

- Open the APP, tap the Register button to enter this page.
- According to the prompts, type in the information to create an account.

3.2 Add Datalogger

- Login the account and click the Datalogger button. Tap the "+" button on the top-right corner of the Datalogger page.
- Scan the PN on the Wi-Fi Plug Pro, or input it manually.
- According to the prompts, type in the information to finish add datalogger.

